

PAMAS DPFS

Particle size distribution analyzer for Granulates and Powders



Dry Powder Feeding System PAMAS DPFS



High resolution size distribution analysis

- Real time display during analysis
- Continually updated histogram display
- Sieve size analysis display
- Size ranges from:
20 μm – 8,000 μm
- Population-, volume- and area-distribution is one analysis
- Simplest operation with fully automated sample feeding and analysis
- Option: Dry powder auto-sampling adaption (up to 20 samples)

Universal size distribution analyzer for granulates and powders with autosampling adaption

PAMAS DPFS

The PAMAS DPFS System can handle powders and granulates. It is operated by PAMAS PMA, ASD, or DAS autosampling software.

Sampling

Very simple operation: Dry samples are placed in a feeding device. They are conveyed to the sensor by a vibrating chute assisted by a vacuum pump. Transportation and dosing are controlled by a micro processor. Each individual particle is counted and sized.

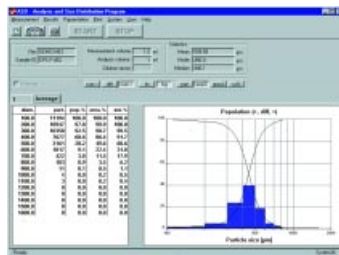
PAMAS DPFS

• Preadjustable and automated sampling routines

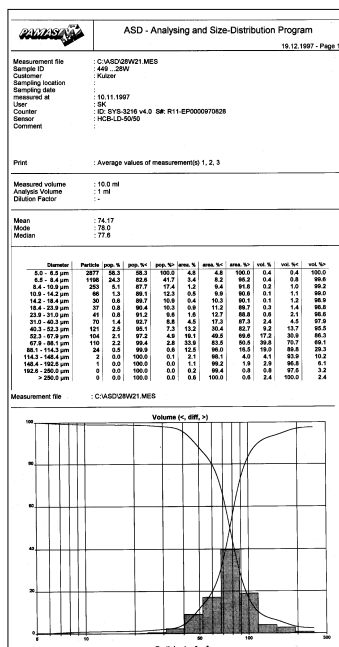
- Up to 32 user adjustable size channels
- Threshold adjustment by D/A-converter
- Small sample volumes
- Automated constant sample transport with dosage control

Calibration of Sensors

Standard calibration of sensors with latex spheres according to ANSI/NFPA T2.9.6R1-1990, ASTM F 658-80 or additional calibration.



Complete remote control by PAMAS ASD, DAS or PAMAS PMA software with data storage in ASCII code.

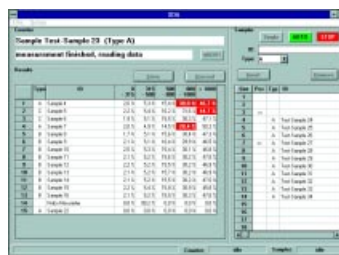


Printout including all sample parameters, numerical and graphical.

Autosampling system for up to 20 samples



- For unattended operation of PAMAS DPFS
- Saves time at batch analysis
- Asynchronous measurement and user operation: can be loaded while performing measurement
- Starts operation immediately after first sample is inserted
- Easy handling
- Fulfills all national and international safety regulation



The controller software displays results immediately. You can check results at a glance.

Technical data

Counter:

- Backlit graphical LC-display with 320x240 pixels resolution
- Data transfer: ASCII code using RS-232C port
- Power supply: 110 V, 120 V, 230 V, 240V 50-60 Hz

Sensors:

HCB-LD-100

Size range: 10-800 µm
MPC: 2,000 P/sec

HCB-LD-250

Size range: 20-2,000 µm
MPC: 1,000 P/sec

HCB-LD-900

Size range: 30-8,000 µm
MPC: 1,000 P/sec

For particles smaller than 50 µm we strongly recommend to use the PAMAS SVSS system.

Maximum particle concentration (MPC) for coincidence error less than 7.8%

All properties mentioned herein may change without being notified.

PAMAS HEAD OFFICE

Dieselstraße 10
D-71277 Rutesheim
Phone +49 7152 9963-0
Fax +49 7152 54862
E-mail info@pamas.de

PAMAS USA

6721 East 106th Street
Tulsa, Oklahoma, USA 74133
Phone +1 918 299 4019
Fax +1 918 299 7410
E-mail EdBielo@earthlink.net

PAMAS FINLAND

JHC, Hirsalantie 11
FIN, 02420 Jorvas
Phone +358 9 299 6886
Fax +358 9 299 6671
E-mail esko.niiranen@pamas.inet.fi

PAMAS BENELUX

Ravesteinstraat 33
B-3191 Hever
Phone +32-15 52 53 73
Fax +32-15 52 53 75
E-mail Paul.Pollmann@glo.be